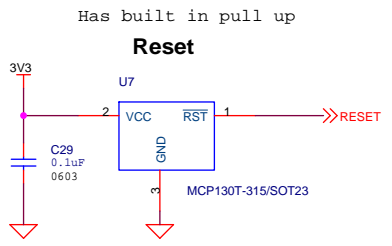


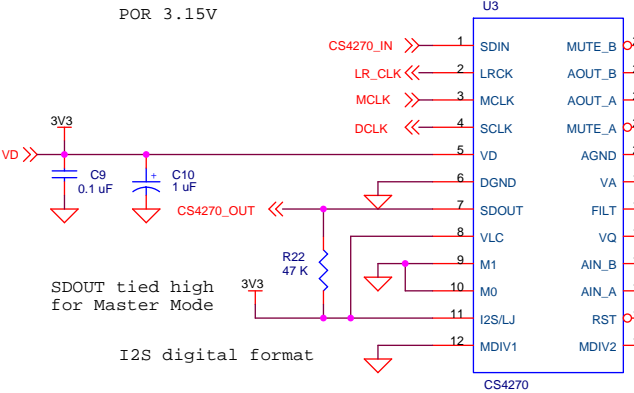
Audio Mojo Mini

Designed for Stand Alone Mode

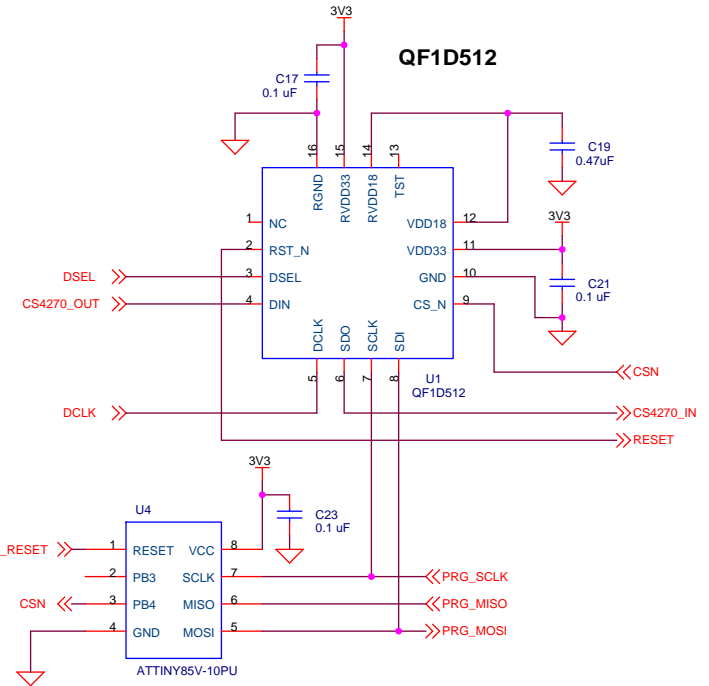
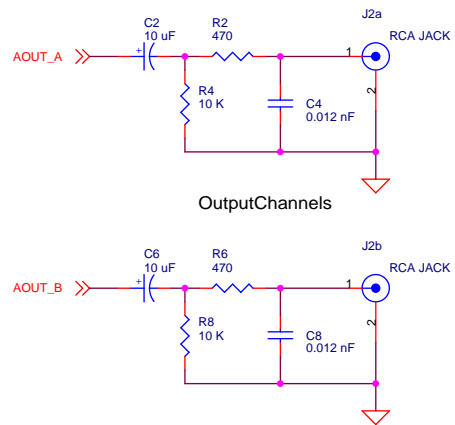
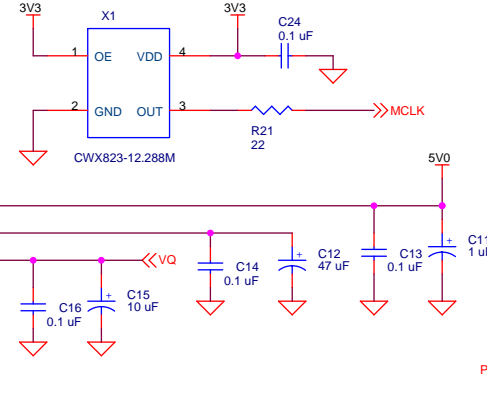
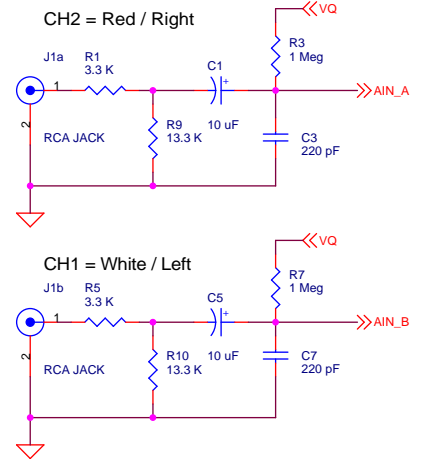
Oscillator for CS4270



Set to 48 kHz sampling rate. See Cirrus Logic data sheet for other sampling rate options

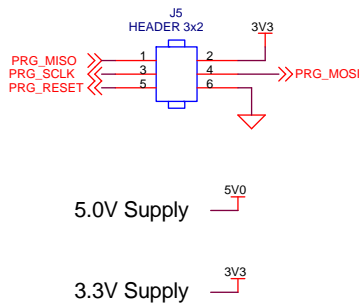


R9 and R10 = 1Vrms when 13.3K.
If 2.2K then 2Vrms input.

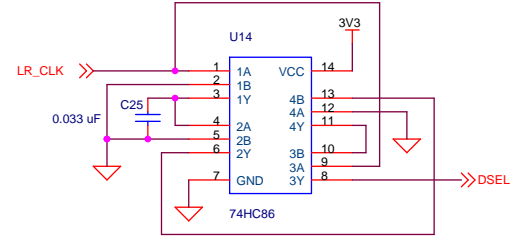


Auto Configure Auto Load

Optional Programming Header



Creates pulse at every LR clock transition point.



Title		
Audio Mojo Minimized Design		
Size B	Document Number Audio Mojo	Rev B
Date:	Monday, August 11, 2008	Sheet 3 of 3